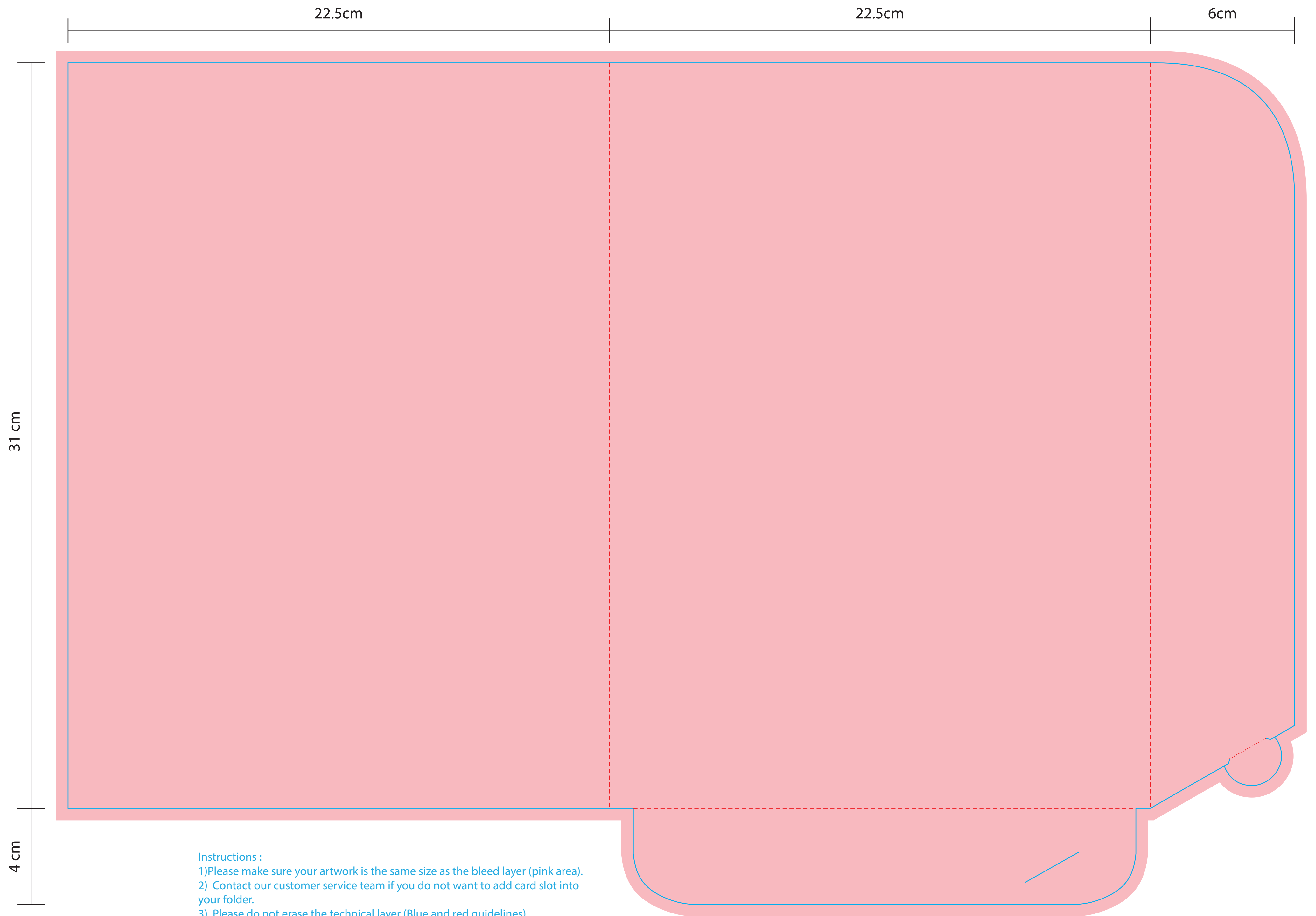


Cover

To design only the outside/cover of the folder, use this template



Instructions :
1)Please make sure your artwork is the same size as the bleed layer (pink area).
2) Contact our customer service team if you do not want to add card slot into your folder.
3) Please do not erase the technical layer (Blue and red guidelines)
4) After inserting your artwork, you may delete the bleed layer.
5) The card slot has a fixed shape meant for business cards which are w9 x h5.5cm

Good luck!

When folder is closed size: (W) 22.5cm x (H) 31cm

Inside

To design only the outside/cover of the folder, use this template