

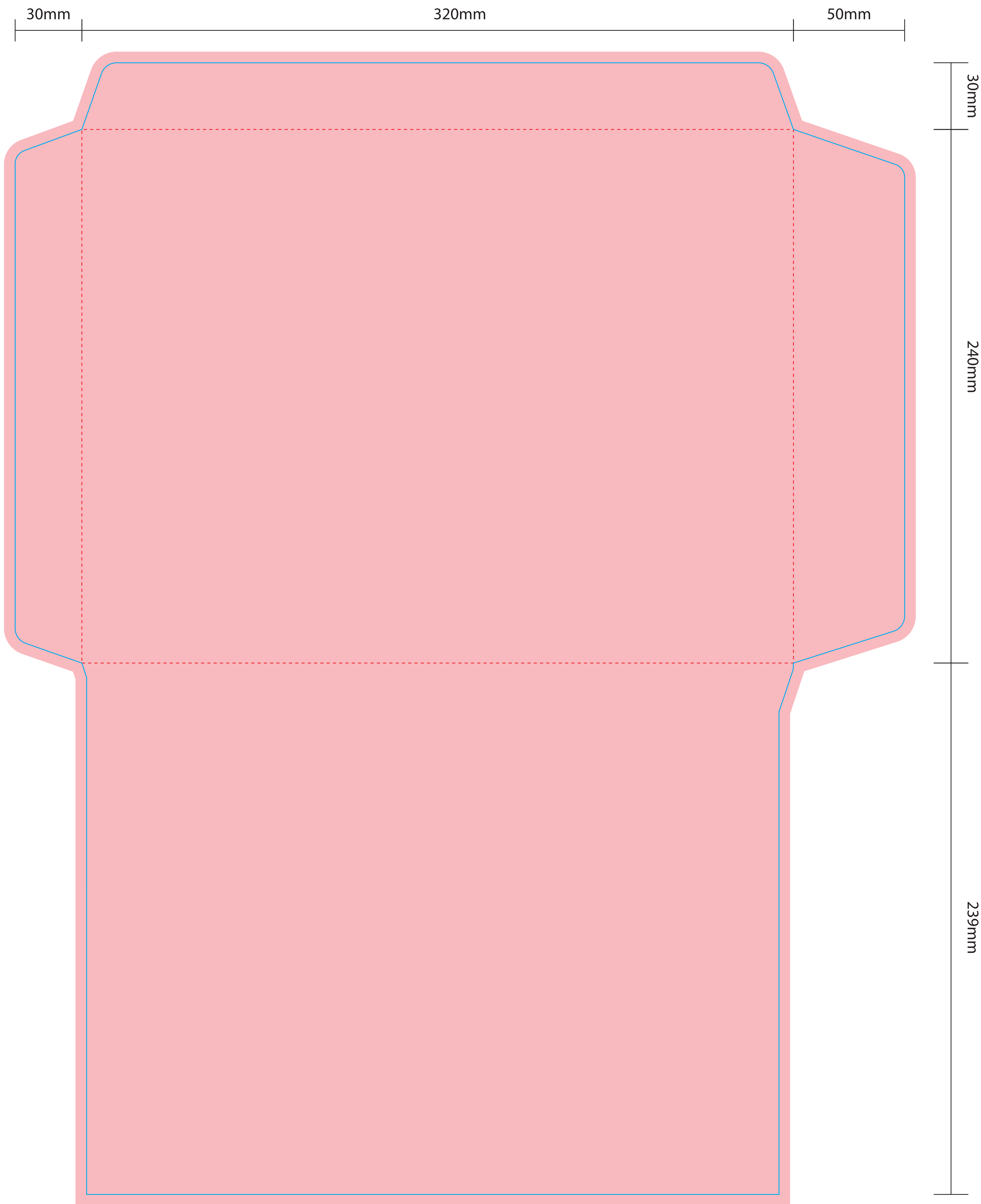
Instructions :

- 1) Please make sure your artwork is the same size as the bleed layer (pink area).
- 2) Please do not erase the technical layer (Blue and red guidelines)
- 3) After inserting your artwork, you may delete the bleed layer.

Good luck!

Closed Size: 240mm x 320mm

Outside



- Instructions :
- 1) Please make sure your artwork is the same size as the bleed layer (pink area).
 - 2) Please do not erase the technical layer (Blue and red guidelines)
 - 3) After inserting your artwork, you may delete the bleed layer.

Good luck!

Closed Size: 240mm x 320mm

Inside